



## AX-X1 Auxiliary contact

### 1. Compliant standards

IEC60947-5

### 2. Compliant certification

CE

### 3. Major function

To achieve long-distance signal indication for the open/close status of the circuit breaker

### 4. Parameters and performance

Table 1

Utilization category	Rated operating voltage V	Rated operating current A
AC-12	AC 415	3
	AC 240	6
DC-12	DC 130	1
	DC 48	2
	DC 24	6

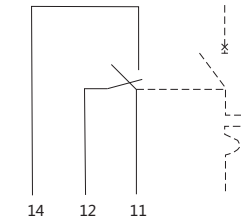
Figure 1

Action characteristics: Figure 1 shows the wiring diagram for auxiliary contacts.

When the auxiliary contacts is open, terminals 11 and 12 are connected;

When the auxiliary contacts is closed, terminals 11 and 14 are connected.

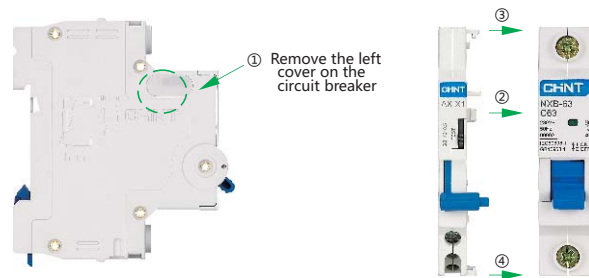
Life: Operating life of auxiliary contacts is  $\geq 10000$  cycles.



### 5. Assembly and installation of the product

Can be assembled with NXB-63, NXB-40 series circuit breakers, with assembly diagram shown below:

Figure 2



After AX-X1 is assembled with the circuit breaker, mount them on the TH3.5-7.5 steel mounting rail.



تهران - خیابان لاله زارنو - بالاتر از منوچهری - پاساژ البرز ۲۰ - طبقه اول - واحد ۲۳۵

۰۲۱-۶۶۳۴۱۰۹۰-۹۲

۰۹۳۹۶۲۹۲۰۰۱

plus.ir/peoe\_iran

aparat.com/peoe\_iran

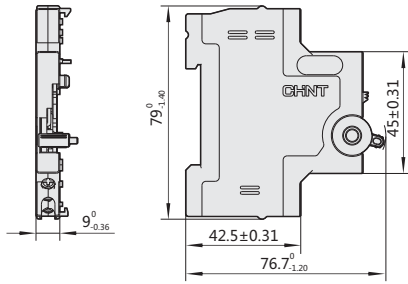
www.peoe.ir

t.me/peoe\_iran

instagram.com/peoe\_iran

6. Dimensions and installation sizes

Figure 3



www.peoer.ir